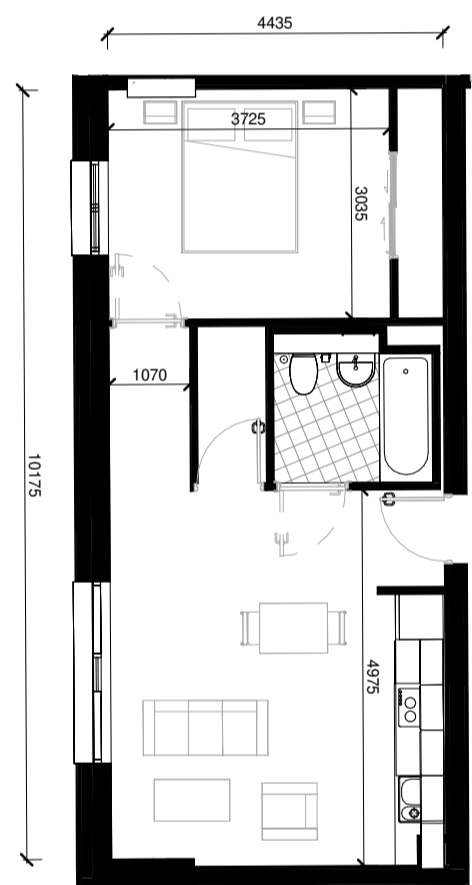


2 Bed Type 2A
1 : 100

Apartment Numbers:

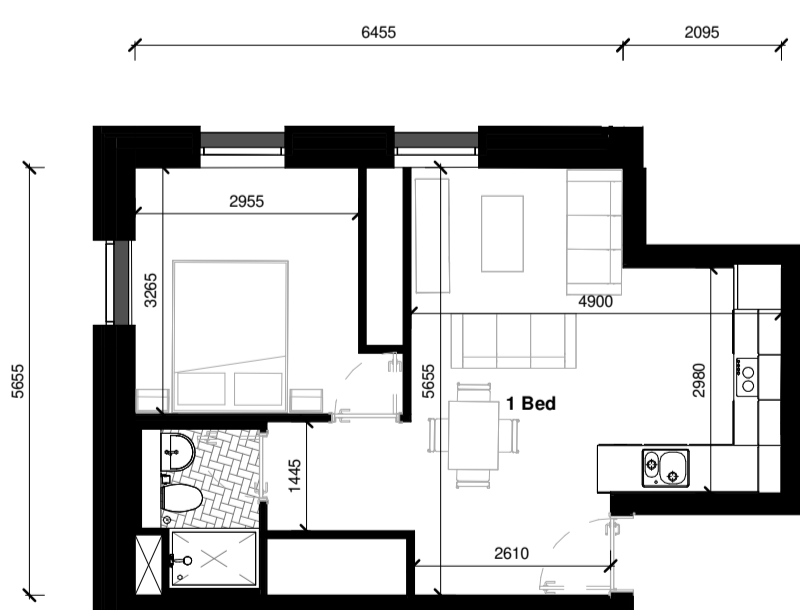
- | | | | |
|----------|----------|----------|----------|
| B.L01.13 | B.L07.12 | C.GL.01 | C.L05.20 |
| B.L02.13 | B.L08.12 | C.ML.18 | C.L06.20 |
| B.L03.13 | B.L09.08 | C.L01.20 | C.L07.18 |
| B.L04.13 | B.L10.05 | C.L02.20 | C.L08.18 |
| B.L05.13 | B.L11.05 | C.L03.20 | C.L09.08 |
| B.L06.13 | | C.L04.20 | |



1 Bed Type 1B
1 : 100

Apartment Numbers:

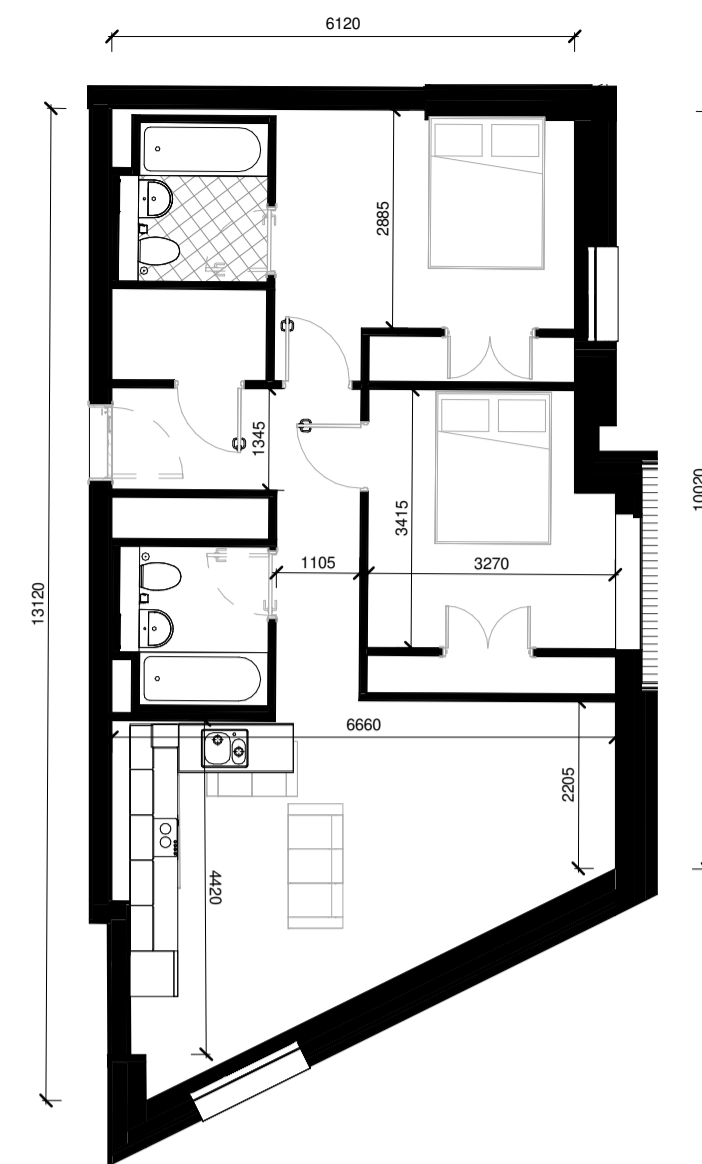
- | | |
|----------|----------|
| C.ML.09 | C.L04.11 |
| C.ML.11 | C.L04.13 |
| C.L01.11 | C.L05.11 |
| C.L01.13 | C.L05.13 |
| C.L02.11 | C.L06.11 |
| C.L02.13 | C.L06.13 |
| C.L03.11 | C.L07.09 |
| C.L03.13 | C.L07.11 |



1 Bed Type 1S
1 : 100

Apartment Numbers:

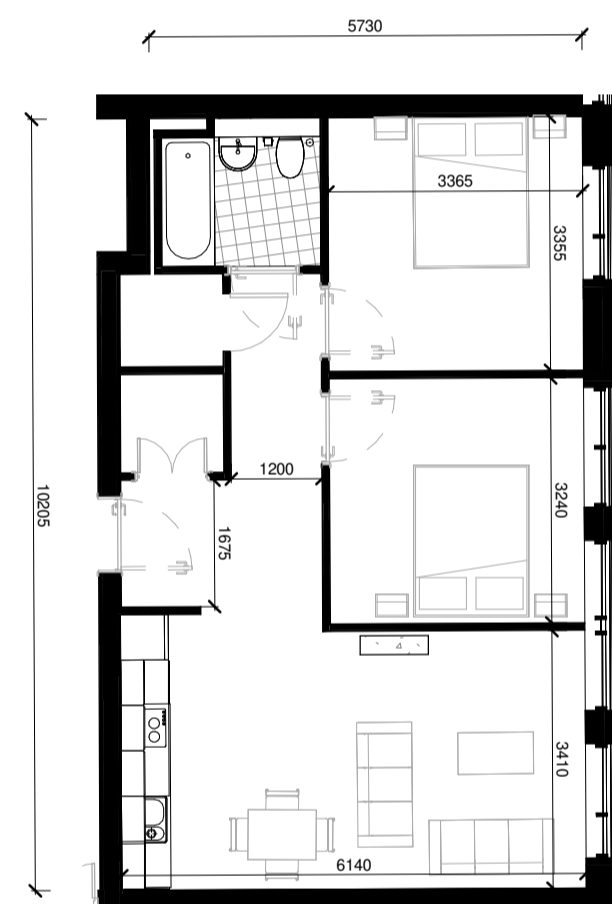
- C.L08.04



2 Bed Type 2B
1 : 100

Apartment Numbers:

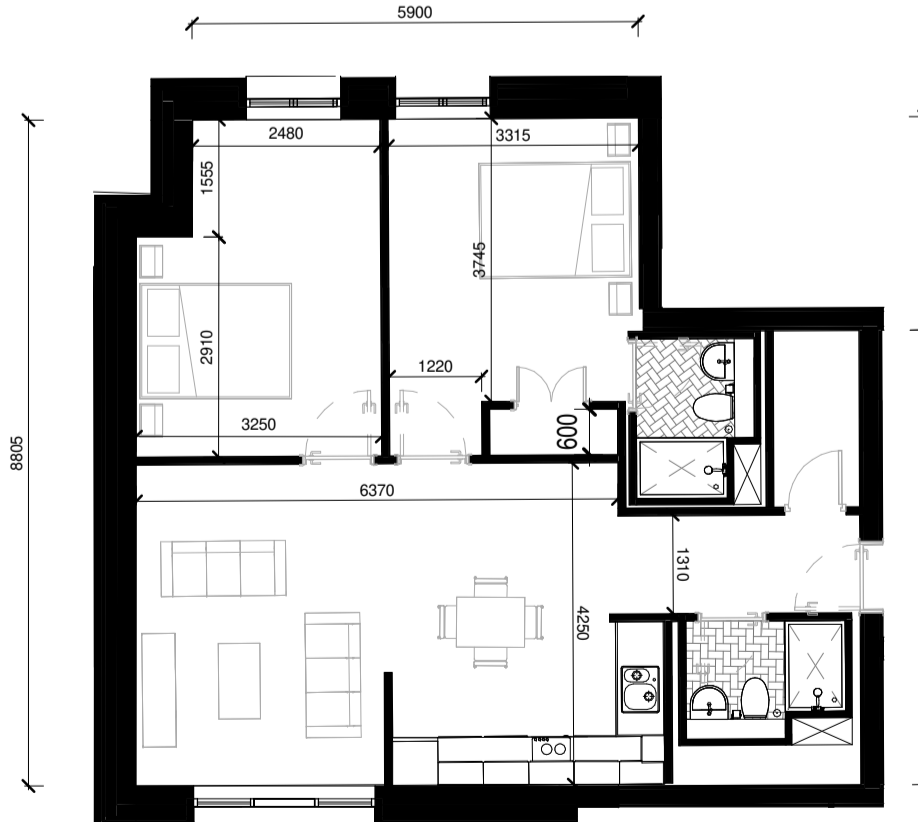
- C.GL.02



2 Bed Type 2.3A
1 : 100

Apartment Numbers:

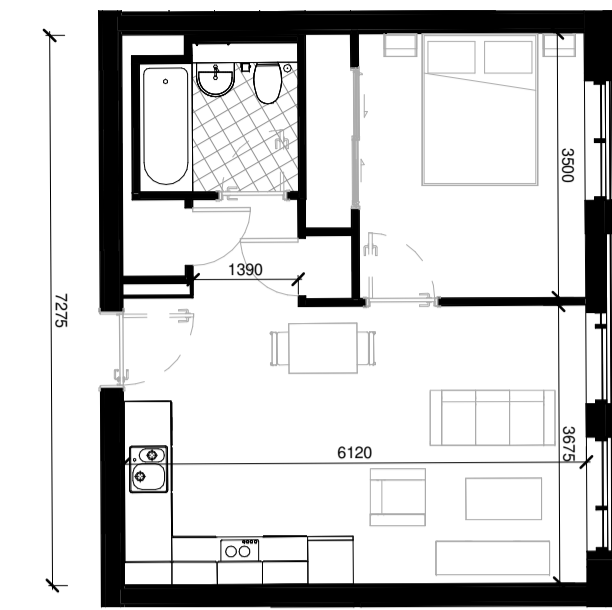
- C.ML.08
C.L01.10
C.L02.10
C.L03.10
C.L04.10
C.L05.10
C.L06.10
C.L07.10



2 Bed Type 2D
1 : 100

Apartment Numbers:

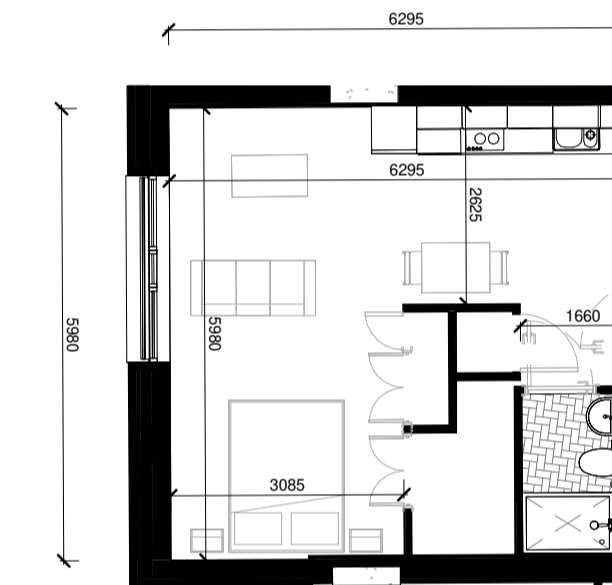
- C.ML.03
C.L01.05
C.L02.05
C.L03.05
C.L04.05
C.L05.05
C.L06.05



1 Bed Type 1A
1 : 100

Apartment Numbers:

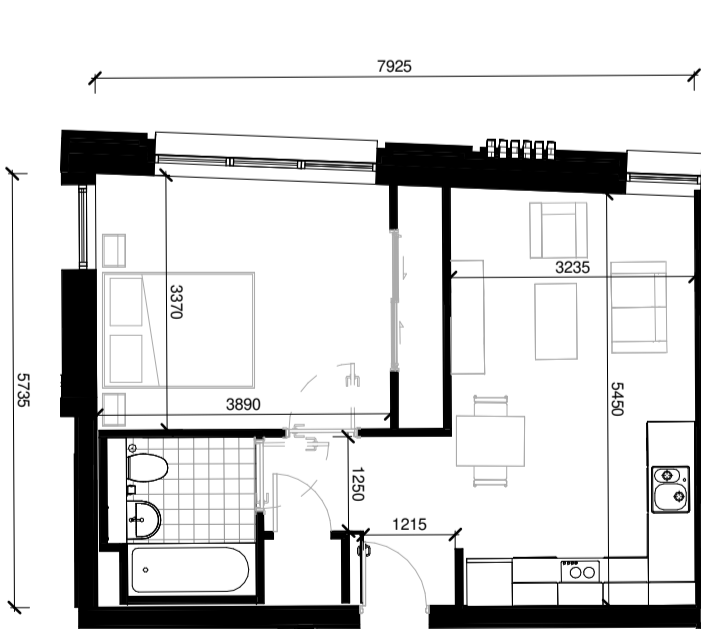
- | | | | | | | | | |
|----------|----------|----------|----------|----------|----------|----------|----------|----------|
| B.ML.01 | B.L02.05 | B.L04.05 | B.L06.05 | B.L08.04 | C.ML.04 | C.L02.06 | C.L04.06 | C.L06.06 |
| B.ML.02 | B.L02.06 | B.L04.06 | B.L06.06 | B.L08.05 | C.ML.10 | C.L02.12 | C.L04.12 | C.L06.12 |
| B.ML.03 | B.L02.07 | B.L04.07 | B.L06.07 | B.L08.06 | C.ML.12 | C.L02.14 | C.L04.14 | C.L06.14 |
| B.ML.04 | B.L02.09 | B.L04.09 | B.L06.09 | B.L08.08 | C.ML.13 | C.L02.15 | C.L04.15 | C.L06.15 |
| B.ML.05 | B.L02.10 | B.L04.10 | B.L06.10 | B.L08.09 | C.ML.14 | C.L02.16 | C.L04.16 | C.L06.16 |
| B.ML.06 | B.L02.11 | B.L04.11 | B.L06.11 | B.L08.10 | C.ML.16 | C.L02.18 | C.L04.18 | C.L06.18 |
| B.ML.07 | B.L02.12 | B.L04.12 | B.L06.12 | B.L08.11 | C.ML.17 | C.L02.19 | C.L04.19 | C.L06.19 |
| B.ML.08 | B.L03.05 | B.L05.05 | B.L07.04 | B.L09.06 | C.L01.06 | C.L02.06 | C.L05.06 | C.L07.04 |
| B.L01.05 | B.L03.06 | B.L05.06 | B.L07.05 | B.L09.07 | C.L01.12 | C.L03.12 | C.L05.12 | C.L07.10 |
| B.L01.06 | B.L03.07 | B.L05.07 | B.L07.06 | B.L10.03 | C.L01.14 | C.L03.14 | C.L05.14 | C.L07.12 |
| B.L01.07 | B.L03.09 | B.L05.09 | B.L07.08 | B.L10.04 | C.L01.15 | C.L03.15 | C.L05.15 | C.L07.13 |
| B.L01.09 | B.L03.10 | B.L05.10 | B.L07.09 | B.L11.03 | C.L01.16 | C.L03.16 | C.L05.16 | C.L07.14 |
| B.L01.10 | B.L03.11 | B.L05.11 | B.L07.10 | B.L11.04 | C.L01.18 | C.L03.18 | C.L05.18 | C.L07.16 |
| B.L01.11 | B.L03.12 | B.L05.12 | B.L07.11 | | C.L01.19 | C.L03.19 | C.L05.19 | C.L07.17 |
| B.L01.12 | | | | | | | | C.L08.05 |



Studio Type SA
1 : 100

Apartment Numbers:

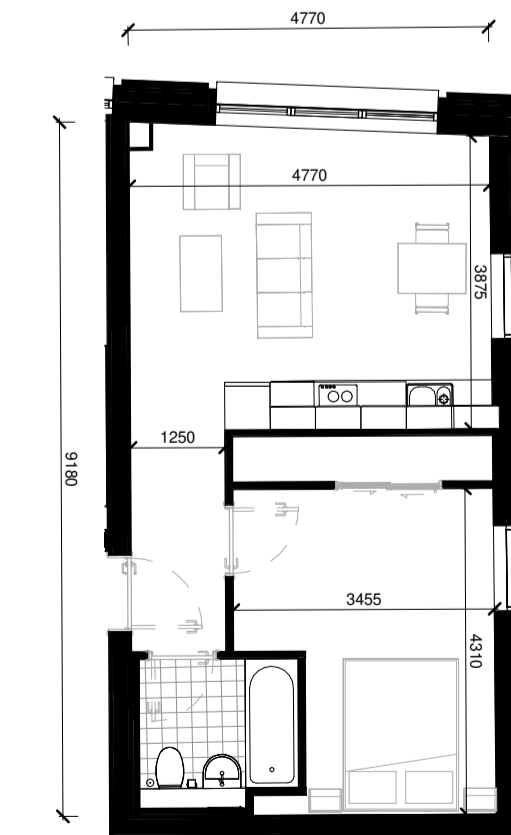
- | | | | |
|----------|----------|----------|----------|
| B.L01.04 | C.ML.05 | C.L04.02 | C.L08.02 |
| B.L02.04 | C.L01.01 | C.L04.07 | C.L08.06 |
| B.L03.04 | C.L01.02 | C.L04.09 | C.L08.08 |
| B.L04.04 | C.L01.07 | C.L05.02 | C.L09.02 |
| B.L05.04 | C.L01.09 | C.L05.07 | |
| B.L06.04 | C.L02.02 | C.L05.09 | |
| B.L07.03 | C.L02.07 | C.L06.02 | |
| B.L08.03 | C.L02.09 | C.L06.07 | |
| B.L09.03 | C.L03.02 | C.L06.09 | |
| | C.L03.07 | C.L07.02 | |
| | C.L03.09 | C.L07.05 | |
| | | C.L07.07 | |



1 Bed Type 1C
1 : 100

Apartment Numbers:

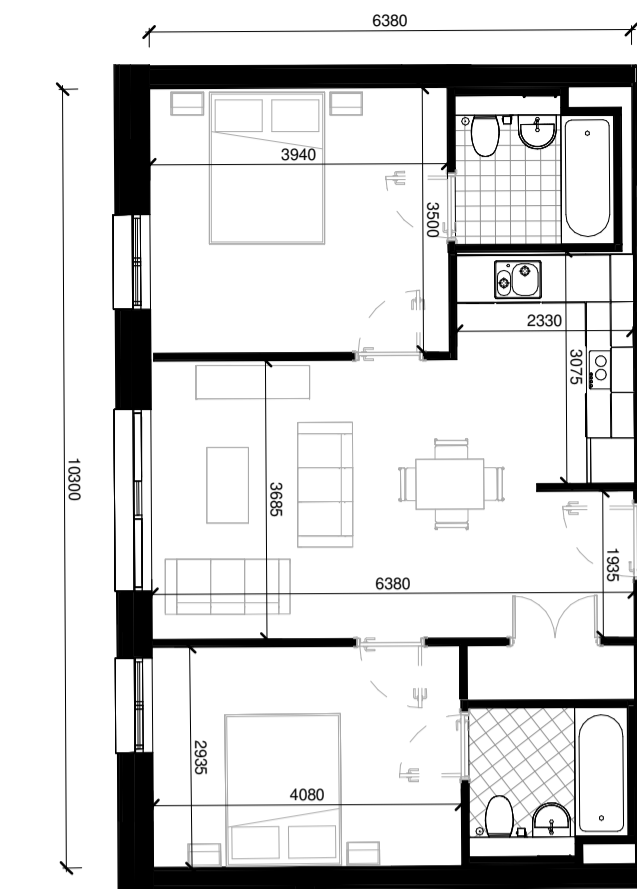
- C.ML.02
C.L01.04
C.L02.04
C.L03.04
C.L04.04
C.L05.04
C.L06.04



1 Bed Type 1D
1 : 100

Apartment Numbers:

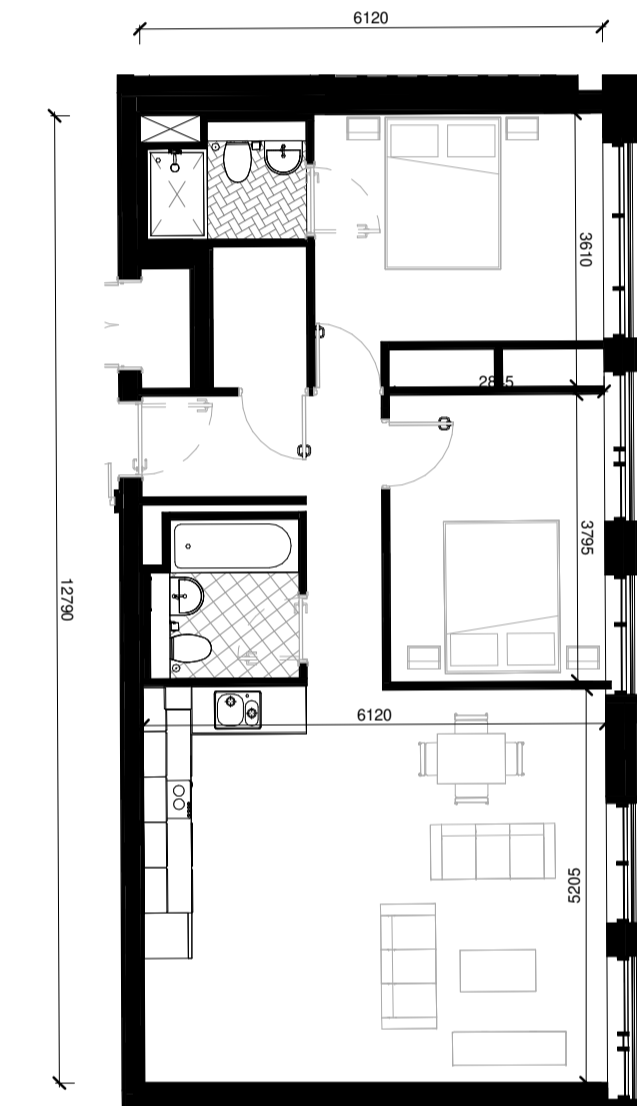
- C.ML.01
C.L01.03



2 Bed Type 2.3B
1 : 100

Apartment Numbers:

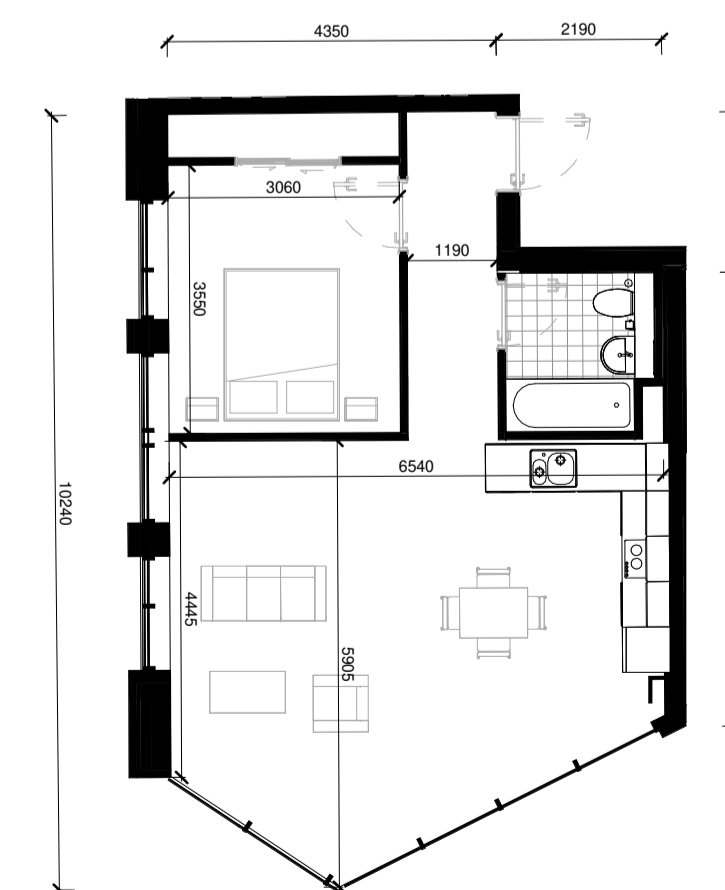
- C.ML.15
C.L01.17
C.L02.17
C.L03.17
C.L04.17
C.L05.17
C.L06.17
C.L07.17



2 Bed Type 2C
1 : 100

Apartment Numbers:

- | | |
|----------|----------|
| B.L01.08 | C.ML.06 |
| B.L02.08 | C.L01.08 |
| B.L03.08 | C.L02.08 |
| B.L04.08 | C.L03.08 |
| B.L05.08 | C.L04.08 |
| B.L06.08 | C.L05.08 |
| B.L07.07 | C.L06.08 |
| B.L08.07 | C.L07.08 |
| | C.L08.07 |
| | C.L09.06 |



1 Bed Type 1E
1 : 100

Apartment Numbers:

- B.ML.09

Notes:
DO NOT SCALE FROM THIS DRAWING. USE FIGURED DIMENSIONS IN ALL CASES. VERIFY DIMENSIONS ON SITE AND REPORT ANY DISCREPANCIES TO THE ARCHITECTS IMMEDIATELY. THIS DRAWING TO BE READ IN CONJUNCTION WITH THE ARCHITECTS SPECIFICATION. © THIS DRAWING IS COPYRIGHT AND MAY ONLY BE REPRODUCED WITH THE ARCHITECTS PERMISSION.

OSI License Number - AR 003219
Projection / Spatial Reference: IRENE19_ Irish_Transverse_Mercator
Centre Point Coordinates: X: Y: 71367.3699, 73403.2446
Reference Index:
Map Series / Map Sheets
1:1,000 | 3263-02
1:1,000 | 3263-08
1:1,000 | 3263-07
1:1,000 | 3263-03
Vertical Datum: MALIN HEAD

P02	27/01/20	EOB	Full Planning ABP issue
P01	14/06/19	EOB	Pre-Planning ABP issue

Rev	Date	DRN	Description
-----	------	-----	-------------

Reddy Architecture + Urbanism
Darryl Mills,
Darryl Road,
Dublin 6, D06 Y0E3,
T: +353 (0)1 4887000
W: www.reddyarchitecture.com
E: info@reddyarchitecture.com

Client Details:
Ruiside Developments Ltd.

Project Details:
PGATE
42A Parkgate Street, Dublin 8

Drawing Title:
Apartment Types Sheet 01

Job No	Date	Scale@A1
P18-107D	27/01/20	1 : 100
Status	Drawn By:	
Planning	J.Basquel	
Purpose:	Checked By:	
Planning Permission	E.O'Brien	
Drawing Number	Revision	
PGATE-RAU-ZZ-ZZ-DR-A-APT-33305	P02	